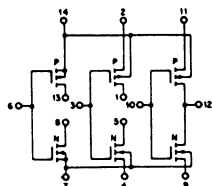
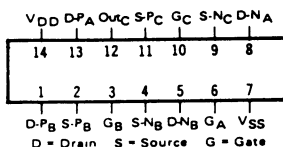


SCL4007UB

DUAL COMPLEMENTARY PAIR PLUS INVERTER

**STATIC CHARACTERISTICS: ($V_{SS} = 0\text{ V}$)**

PARAMETER	CONDITIONS	V_{DD} (Vdc)	T_{LOW}^*		+ 25°C			T_{HIGH}^{**}		UNIT
			MIN	MAX	MIN	TYP	MAX	MIN	MAX	
QUIESCENT DEVICE CURRENT I_{DD}	$V_{IN} = V_{SS}$ OR V_{DD}	5		0.05		0.0005	0.05		1.5	μAdc
		10		0.1		0.001	0.1		3.0	
		15		0.2		0.002	0.2		6.0	

Note: $*T_{LOW} = -55^\circ\text{C}$ for C / H devices, -40°C for E / S devices, $**T_{HIGH} = +125^\circ\text{C}$ for C / H devices, $+85^\circ\text{C}$ for E / S devices.

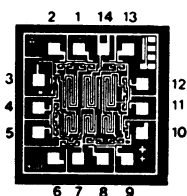
DYNAMIC CHARACTERISTICS: ($C_L = 50\text{pF}$, $T_A = 25^\circ\text{C}$)

PARAMETER	V_{DD} Vdc	MINIMUM	TYPICAL	MAXIMUM	UNIT
PROPAGATION DELAY TIME t_{PLH} , t_{PHL}	5		55	110	ns
	10		30	60	
	15		25	50	
OUTPUT TRANSITION TIME t_{TLH} , t_{THL}	5		100	200	ns
	10		50	100	
	15		40	80	

DIE DRAWING

SCL4007UB

48 x 50 mils



Note: Refer to "SCL4000B SERIES FAMILY SPECIFICATIONS" for remaining Dynamic & Static Characteristics, and, for recommended and maximum operating conditions.