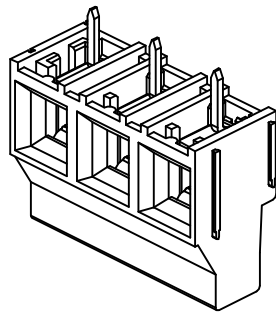
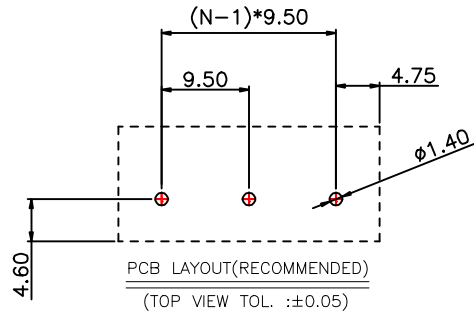


RoHS Compliant Customer Drawing

REV.	ECN NO.	DESCRIPTION	DATE	DESIGN



SPECIFICATION

MATERIAL

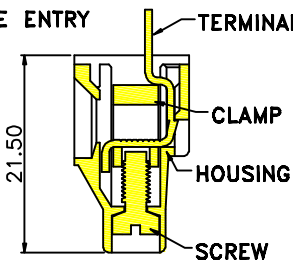
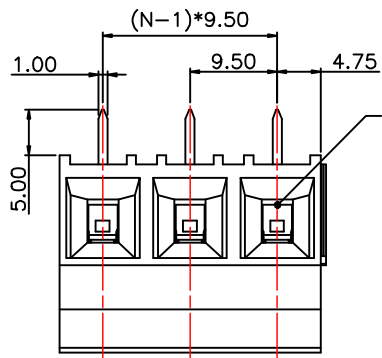
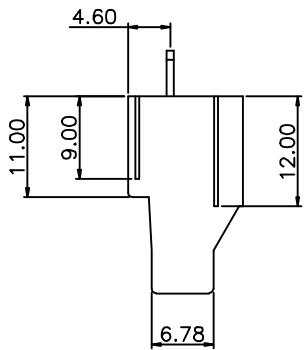
Housing:PA66,UL94V-0
 Screw:M3 Steel,Zinc Plated
 Terminal:Brass,Tin Plated
 Clamp:Brass,Ni Plated

ELECTRICAL

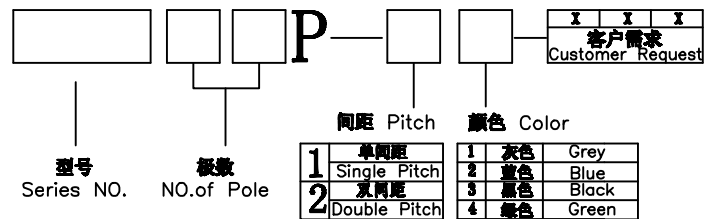
Rated voltage:300V
 Rated current: 32A
 Wire Range(AWG/MM²):24-10AWG/0.2-6MM²
 Withstanding voltage: AC3000V/ 1Min

MECHANICAL

Torque:0.5Nm(4.4Lb-In.)
 Strip Length:8mm
 Operating Temperature:-40°C~+105°C

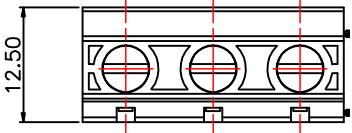


订购方式/HOW TO ORDER



1	2	间距 Pitch
单间距	Single Pitch	
双间距	Double Pitch	

1	2	3	4	5	6	7	8	9	颜色 Color
1	2	3	4	5	6	7	8	9	灰色 Grey
2	3	4	5	6	7	8	9	蓝色 Blue	
3	4	5	6	7	8	9		黑色 Black	
4	5	6	7	8	9			绿色 Green	
5	6	7	8	9				橙色 Orange	
6	7	8	9					红色 Red	
7	8	9						透明 Transparent	
8	9							黄色 Yellow	
9								白色 White	



N=No. of contacts

CONTACT WITH US:
 TEL:+86-574-63505128 FAX:+86-574-63532183
 E-Mail:sales@nbmax.com.cn Website:www.nbmax.com.cn

公差一览表				NINGBO MKX ELECTRONIC TECHNOLOGY CO.,LTD					
TOLERANCE UNLESS OTHERWISE				NINGBO MKX ELECTRONIC TECHNOLOGY CO.,LTD					
X.	±0.25	X*	±5°	单位 UNITS	mm	制图 DRAWING	陈冬梅	产品名称 TITLE	MX950-9.5
.X	±0.20	.X*	±2°	角法 VIEW	第一角法	设计 DESIGN	顾兴伟		
.XX	±0.15	.XX*	±1°	比例 SCALES	1:1	审核 CHECK		产品料号 PART NO.	MX950-9.5
.XXX	±0.02	.XXX*	±0.5°	日期 DATE	2012.07.10	版本 VER	A0	图号 DRAW NO.	MX950-9.5-A0