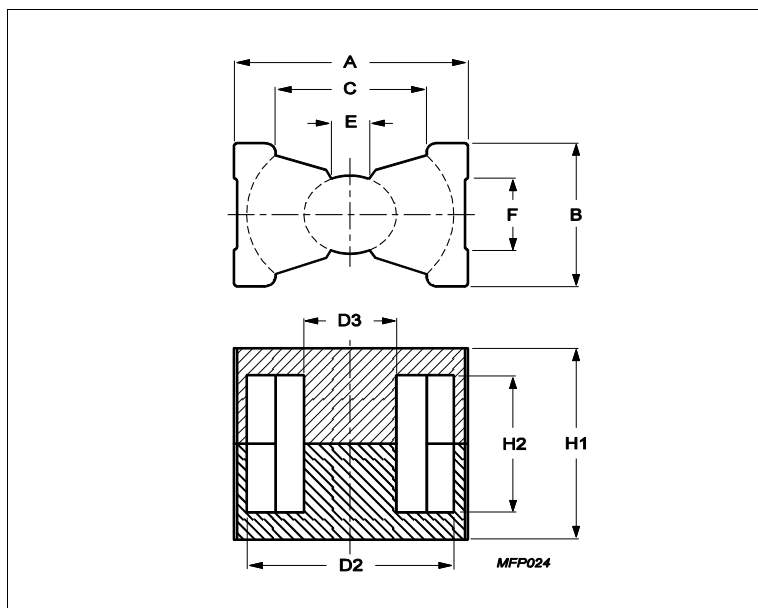


## Core **PQ32/20**



Effective parameters			
	Parameter	Value	Unit
$\Sigma(I/A)$	core factor (C1)	0.331	mm <sup>-1</sup>
<b>Ve</b>	effective volume	9440	mm <sup>3</sup>
<b>Le</b>	effective length	55.9	mm
<b>Ae</b>	effective area	169	mm <sup>2</sup>
<b>Amin</b>	minimum area	142	mm <sup>2</sup>
<b>m</b>	PQ32/20	≈ 43	g/set

**Dimensions for product: PQ32/20**

	Nom	Tol +	Tol -	Max	Min	Unit
<b>A</b>	33.00	0.50	0.50	33.50	32.50	mm
<b>B</b>	22.00	0.50	0.50	22.50	21.50	mm
<b>C</b>					19.00	mm
<b>D2</b>	27.50	0.50	0.50	28.00	27.00	mm
<b>D3</b>	13.50	0.25	0.25	13.75	13.25	mm
<b>E</b>					5.50	mm
<b>F</b>					11.60	mm
<b>H1</b>	20.60	0.25	0.25	20.85	20.35	mm
<b>H2</b>	11.50	0.30	0.30	11.80	11.20	mm

**Inductance factor**

Material	Value	Tol +	Tol -	Unit
3C94	6800	25%	25%	nH/turns <sup>2</sup>
3C95	7560	25%	25%	nH/turns <sup>2</sup>
3C96	6000	25%	25%	nH/turns <sup>2</sup>
3C97	7560	25%	25%	nH/turns <sup>2</sup>
3F36	4200	25%	25%	nH/turns <sup>2</sup>
3F46	2600	25%	25%	nH/turns <sup>2</sup>

**Power loss: 3C94**

Measuring conditions			Max	Unit
100 kHz	200 mT	100 °C	4.700	W/set

**Power loss: 3C95**

Measuring conditions			Max	Unit
----------------------	--	--	-----	------

## Core **PQ32/20**

Power loss: 3C95				
Measuring conditions			Max	Unit
100 kHz	200 mT	100 °C	4.500	W/set
100 kHz	200 mT	25 °C	4.900	W/set
Power loss: 3C96				
Measuring conditions			Max	Unit
100 kHz	200 mT	100 °C	4.200	W/set
400 kHz	50 mT	100 °C	1.800	W/set
Power loss: 3C97				
Measuring conditions			Max	Unit
100 kHz	200 mT	60 °C	4.700	W/set
100 kHz	200 mT	120 °C	4.500	W/set
100 kHz	200 mT	140 °C	5.700	W/set
Power loss: 3F36				
Measuring conditions			Max	Unit
500 kHz	50 mT	100 °C	1.400	W/set
500 kHz	100 mT	100 °C	11.000	W/set
Power loss: 3F46				
Measuring conditions			Max	Unit
1000 kHz	50 mT	100 °C	6.500	W/set
3000 kHz	10 mT	100 °C	4.500	W/set

Bsat					
Measuring conditions			Material	Min	Unit
25 kHz	250 A/m	100 °C	3C94	320	mT
25 kHz	250 A/m	100 °C	3C95	330	mT
25 kHz	250 A/m	100 °C	3C96	340	mT
25 kHz	250 A/m	100 °C	3C97	330	mT
25 kHz	250 A/m	100 °C	3F36	340	mT
25 kHz	250 A/m	100 °C	3F46	330	mT

Accessories		
Ordering name	Description	Ordering code
CLM/P-PQ32/20	Clamp, with ground pin	F0MPQ03220CLMP000P
CPV-PQ32/20-1S-12PD-Z	Coil former, termoplastic, vertical	F0PPQ03220CV01112P
CPV-PQ32/20-1S-12P-Z	Coil former, termoplastic, vertical	F0PPQ03220CV00112P