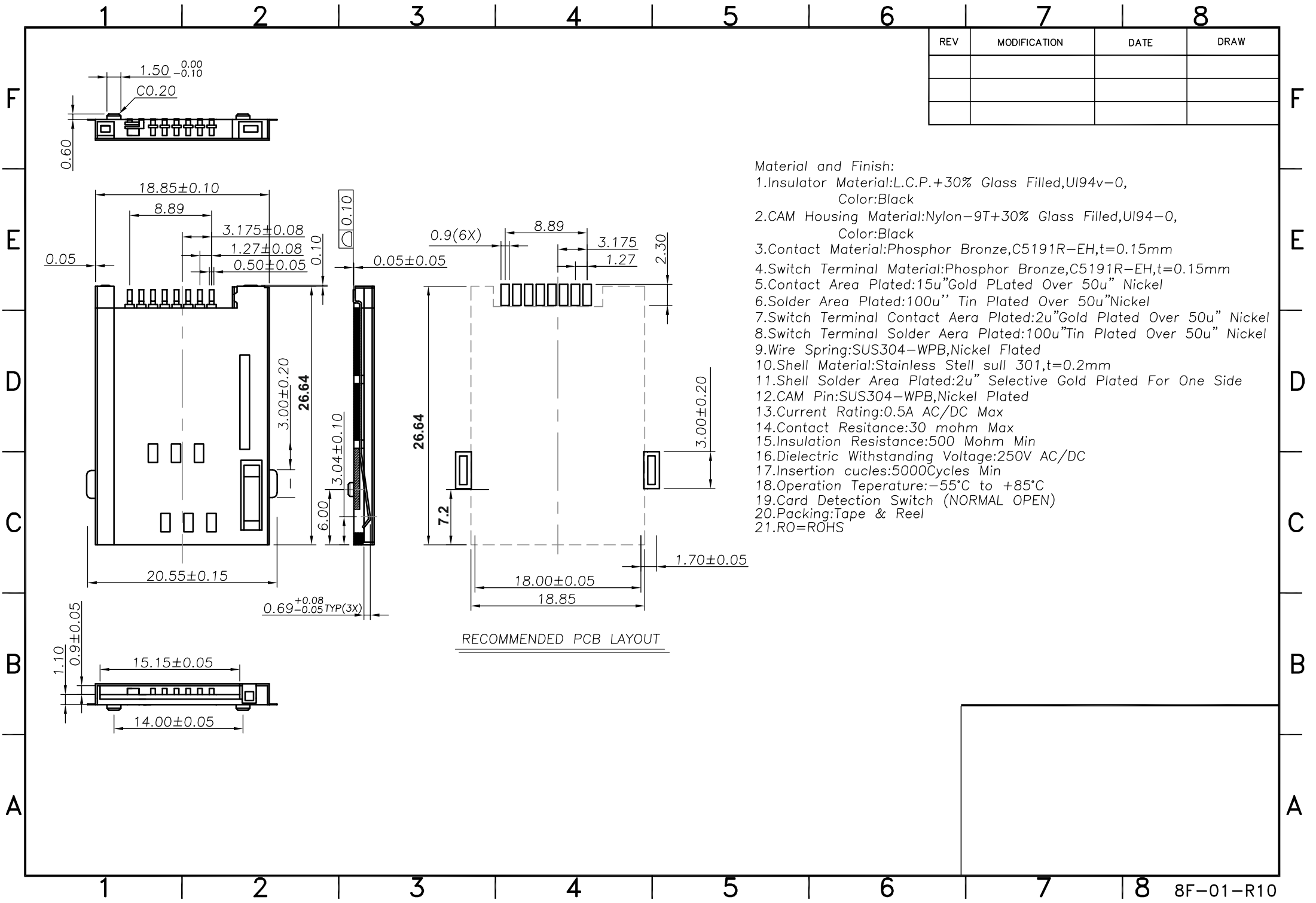


REV	MODIFICATION	DATE	DRAW



- Material and Finish:**
- Insulator Material: L.C.P.+30% Glass Filled, UI94v-0, Color: Black
 - CAM Housing Material: Nylon-9T+30% Glass Filled, UI94-0, Color: Black
 - Contact Material: Phosphor Bronze, C5191R-EH, t=0.15mm
 - Switch Terminal Material: Phosphor Bronze, C5191R-EH, t=0.15mm
 - Contact Area Plated: 15u" Gold Plated Over 50u" Nickel
 - Solder Area Plated: 100u" Tin Plated Over 50u" Nickel
 - Switch Terminal Contact Area Plated: 2u" Gold Plated Over 50u" Nickel
 - Switch Terminal Solder Area Plated: 100u" Tin Plated Over 50u" Nickel
 - Wire Spring: SUS304-WPB, Nickel Plated
 - Shell Material: Stainless Steel 301, t=0.2mm
 - Shell Solder Area Plated: 2u" Selective Gold Plated For One Side
 - CAM Pin: SUS304-WPB, Nickel Plated
 - Current Rating: 0.5A AC/DC Max
 - Contact Resistance: 30 mohm Max
 - Insulation Resistance: 500 Mohm Min
 - Dielectric Withstanding Voltage: 250V AC/DC
 - Insertion cycles: 5000 Cycles Min
 - Operation Temperature: -55°C to +85°C
 - Card Detection Switch (NORMAL OPEN)
 - Packing: Tape & Reel
 - RO=ROHS

RECOMMENDED PCB LAYOUT