

# TES

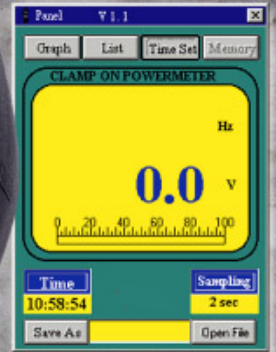
Reliable in Quality



## TES-3063 Power AC/DC Clamp Meter (1Ø2W, 1Ø3W, 3Ø3W, 3Ø4W)

- True Power/Apparent/Power Factor
- RS-232 interface to talk with PC
- Dual display KW + PF , KVA + PF , V+A
- A + Hz , V + Hz
- Datalogging Capacity (4000 Reading)
- Peak/MAX/MIN function

### COSØ, KVA, KW



E205876  
CE U L CLAMP METER LISTED 81JA

EN61010-1  
600V Installation CATIII  
Pollution Degree 2



# TES-3063/3064 Power AC/DC Clamp Meter



## FEATURES

1  $\Phi$  2W, 1  $\Phi$  3W, 3  $\Phi$  3W, 3  $\Phi$  4W

RS-232 interface to talk with PC  
 4 digits with dual display LCD  
 Amp / Voltage frequency measurement  
 Dual display KW+PF , KVA+PF , V+A  
 4000 continuity point data logger , 25 point manual

data logger

True power / apparent power / power factor

measurement

True RMS. V , A , W , cap , Ind , phase indicator

MIN / MAX measurement

Peak hold detector

Dual display A+Hz , V+Hz



**EN61010-1**

600V Installation CAT III

Pollution Degree 2



## SPECIFICATION

True Power & Apparent power measurement

| Input          | Resolution | Accuracy   | Frequency range | Overload protection |
|----------------|------------|------------|-----------------|---------------------|
| V<130V, A<150A | 0.01       | +/- (2%+5) | 45Hz - 500Hz    | 600V/1100A          |
| V>130V, A<150A |            |            |                 |                     |
| V<130V, A>150A |            |            |                 |                     |
| V>130V, A>150A | 0.1        | +/- (2%+1) |                 |                     |

DCA

| Range | Resolution | Accuracy              | Overload protection |
|-------|------------|-----------------------|---------------------|
| 1000A | 0.1A       | +/- (1.5%rdg + 5dgts) | 1100A               |

ACA

| Range | Resolution | Accuracy              | Frequency range | Overload protection |
|-------|------------|-----------------------|-----------------|---------------------|
| 1000A | 0.1A       | +/- (1.5%rdg + 5dgts) | 45Hz - 500Hz    | 1100A               |

· Crest Factor: <4 for stated accuracy

DCV

| Range | Resolution | Accuracy              | Input Impedance | Overload protection |
|-------|------------|-----------------------|-----------------|---------------------|
| 600V  | 0.1V       | +/- (0.5%rdg + 5dgts) | 1M $\Omega$     | 600V                |

## ACV

| Range | Resolution | Accuracy              | Input Impedance | Frequency range | Overload protection |
|-------|------------|-----------------------|-----------------|-----------------|---------------------|
| 600V  | 0.1V       | +/- (0.5%rdg + 5dpts) | 1M $\Omega$     | 45Hz - 500Hz    | 600Vrms             |

· Crest Factor: <3 for stated accuracy

## Peak Indication

| Range       | Resolution | Accuracy              | Overload protection |
|-------------|------------|-----------------------|---------------------|
| 20A - 80A   | 0.1A       | +/- (10%rdg + 10dpts) | 1100A               |
| 80A - 1000A |            | +/- (6%rdg + 10dpts)  |                     |

· Peak Detect Acquisitions Time<=1ms

## Peak Indication

| Range      | Resolution | Accuracy              | Overload protection |
|------------|------------|-----------------------|---------------------|
| 20V - 80V  | 0.1V       | +/- (10%rdg + 10dpts) | 600Vrms             |
| 80V - 600V |            | +/- (6%rdg + 10dpts)  |                     |

· Peak Detect Acquisitions Time<=1ms

## Audible continuity

| Range   | Continuity beeper | Open circuit voltage | Overload protection |
|---|-------------------|----------------------|---------------------|
|  | <=0.050           | <=3.2V               | 600Vrms             |

## Resistance ( $\Omega$ )

| Range        | Resolution | Accuracy            | Frequency range | Overload protection |
|--------------|------------|---------------------|-----------------|---------------------|
| 10K $\Omega$ | 1 $\Omega$ | +/- (1%rdg + 5dpts) | <=3.2V          | 600Vrms             |

## Diode test

| Range   | Resolution | Overload protection |
|---|------------|---------------------|
|  | 0.001V     | 600Vrms             |

## Frequency (Hz)

| Range | Resolution | Accuracy              | Voltage sensitivity | Overload protection |
|-------|------------|-----------------------|---------------------|---------------------|
| 1KHz  | 0.1Hz      | +/- (0.5%rdg + 5dpts) | 10V or 10A          | 600V / 1100A        |
| 5KHz  | 1Hz        |                       |                     |                     |

☑ Optional Accessories: TES-3064 RS-232 Interface Adaptor / Software

## GENERAL SPECIFICATIONS

|   |   |
|---|---|
| Maximum Voltage between any terminal and earth ground | 600Vrms   |
| Numerical Dual Display                                | 4 digit liquid crystal display (LCD) maximum reding 9999. |
| Bargraph display                                      | 40 Segments.  |

|   |  |
|---|--|
| <b>Battery Life</b>                       | 30hr approx. (Alkaline)  |
| <b>Jaw Opening Diameter</b>               | Cables f 46mm.   |
| <b>Operating Temperature and Humidity</b> | 0 °C to 50 °C (32 °F to 122 °F ) R.H. < 80% non-condensing.    |
| <b>Storage Temperature and Humidity</b>   | -10 °C to 60 °C (14 °F to 140 °F ) R.H. < 70% non-condensing.  |
| <b>Dimensions</b>                         | 260mm(L) x 93mm(W) x 45mm(H)                                   |
| <b>Weight</b>                             | Approx. 450g   |
| <b>Accessories</b>                        | Carrying Case, Test leads, One 9V Battery & Instruction manual |

