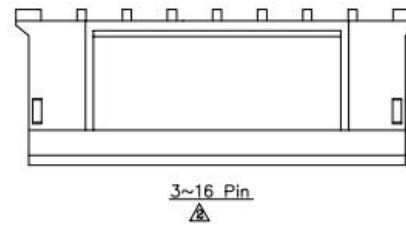
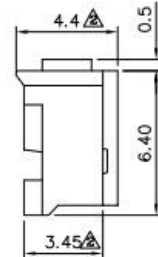
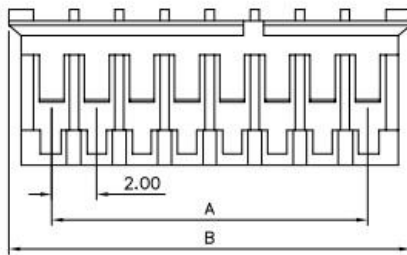
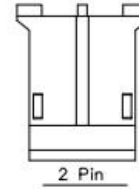
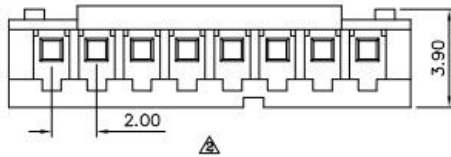


△ SPECIFICATION

Current Rating: 2A AC/DC
 Voltage Rating: 100V AC/Max.
 Operation Temperature: -25°C To +85°C
 Contact Resistance: 20 Milliohms Max.
 Insulation Resistance: 1000 Megaohms Min.
 Withstanding Voltage: 800V AC/Minute
 Insulator: PA66(UL94V-0), White
 RoHS Compliant



Pin	A	B
2	2.0	5.8
3	4.0	7.8
4	6.0	9.8
5	8.0	11.8
6	10.0	13.8
7	12.0	15.8
8	14.0	17.8
9	16.0	19.8
10	18.0	21.8
11	20.0	23.8
12	22.0	25.8
13	24.0	27.8
14	26.0	29.8
15	28.0	31.8
16	30.0	33.8

DRAWING No.

01509

APPROVED BY

MEI

CHECKED BY

HZF

DRAWING BY

LXX

UNLESS OTHERWISE SPECIFIED TOLERANCES ARE

.X ±0.3

.XX ±0.2

ANG.

UNIT

mm



△ A2

Modify Data

HZF

03/23/2010

△ A1

Modify Data

BECKY

2005/02/17

△ A0

NEW RELEASE

NO. REV.

REVISIONS

CHK

DATE

SCALE

NONE

REV.

A2