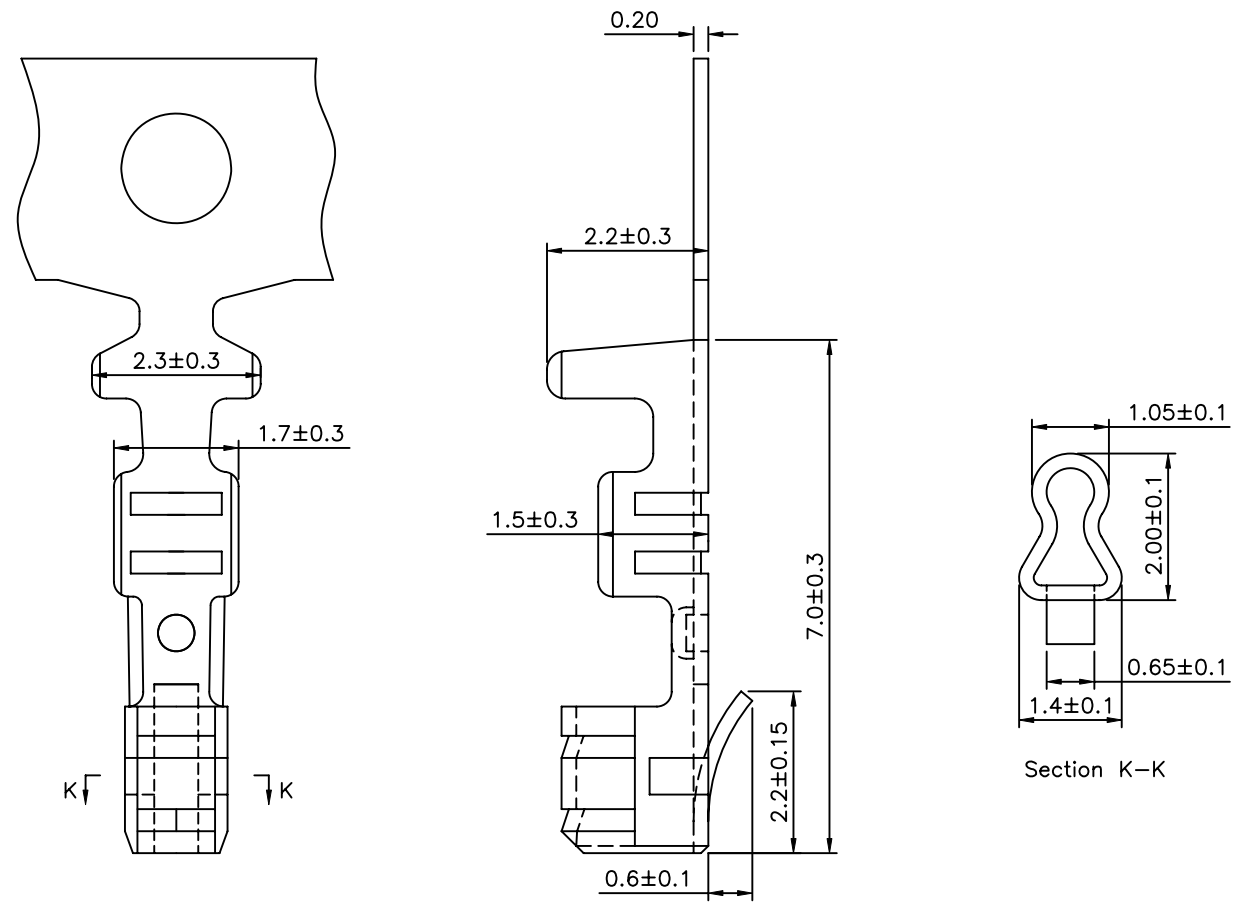


SPECIFICATION
 Current Rating:3A AC/DC
 Voltage Rating:250V AC/DC
 Applicable Wire Range:AWG #22~28
 Accepts With ϕ 0.7mm Round Pin
 Material:Phosphor Bronze,Tin Plated
 Q'ty:10K PCS/Reel
 RoHS Compliant



DRAWING No.		APPROVED BY		UNLESS OTHERWISE SPECIFIED TOLERANCES ARE 1~10 ± 0.2 10~20 ± 0.3 20~40 ± 0.4 40~ ± 0.5			
01698		EMILY					
		CHECKED BY					
		HZF					
DRAWING BY		WZL					
SCALE	NONE	REV.	A0	UNIT	mm		

NO.	REV.	REVISIONS	CHK	DATE
	A0	NEW RELEASE	HZF	09/04/2010