



Component Distributors, Inc. ~ www.cdiweb.com ~ 1-800-777-7334 ~ sales@cdiweb.com

MIW4000 Series

5-6W, Ultra-Wide Input Range DIP, Single & Dual Output DC/DC Converters

Key Features

- Efficiency up to 86%
- 1500VDC Isolation
- MTBF > 1,000,000 Hours
- 4:1 Wide Input Range
- CSA1950 Safety Approval
- Complies with EN55022 Class A
- Temperature Performance -40°C to $+71^{\circ}\text{C}$
- Industry Standard Pinout
- UL 94V-0 Package Material
- Internal SMD Construction



Minmax's MIW4000-Series Power modules are low-profile dc-dc converters that operate over input voltage ranges of 9-36VDC and 18-75VDC which provide precisely regulated output voltages of 3.3V, 5V, 12V, 15V, $\pm 5\text{V}$, $\pm 12\text{V}$ and $\pm 15\text{VDC}$.

The -40°C to $+71^{\circ}\text{C}$ operating temperature range makes it ideal for data communication equipments, mobile battery driven equipments, distributed power systems, telecommunication equipments, mixed analog/digital subsystems, process/machine control equipments, computer peripheral systems and industrial robot systems.

The modules have a maximum power rating of 6W and a typical full-load efficiency of 86%, continuous short circuit, 50mA output ripple, EN55022 Class A conducted noise compliance minimize design-in time, cost and eliminate the need for external filtering.

High Power Density
 More Power

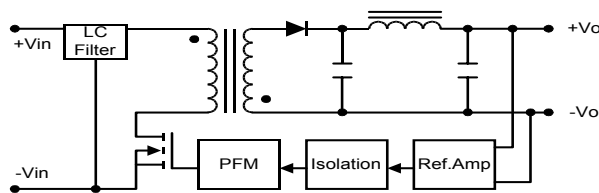
1500 VDC
 I/O Isolation

EMI
 EN55022

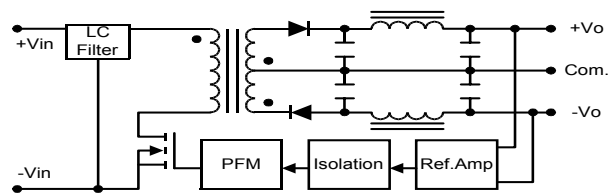
4:1
 Wide Range

Block Diagram

Single Output



Dual Output





MIW4000 Series

Model Selection Guide

Model Number	Input Voltage	Output Voltage	Output Current		Input Current		Reflected Ripple Current	Efficiency
			Max. mA	Min. mA	@Max. Load mA (Typ.)	@No Load mA (Typ.)		
	VDC	VDC						@Max. Load % (Typ.)
MIW4021	24 (9 ~ 36)	3.3	1200	120	212	20	10	78
MIW4022		5	1000	100	257			81
MIW4023		12	500	50	291			86
MIW4024		15	400	40	294			85
MIW4025		±5	±500	±50	257			81
MIW4026		±12	±250	±25	291			86
MIW4027		±15	±200	±20	294			85
MIW4031	48 (18 ~ 75)	3.3	1200	120	106	10	10	78
MIW4032		5	1000	100	129			81
MIW4033		12	500	50	145			86
MIW4034		15	400	40	147			85
MIW4035		±5	±500	±50	123			81
MIW4036		±12	±250	±25	145			86
MIW4037		±15	±200	±20	147			85

Absolute Maximum Ratings

Parameter	Min.	Max.	Unit	
Input Surge Voltage (1000 mS)	24VDC Input Models	-0.7	50	VDC
	48VDC Input Models	-0.7	100	VDC
Lead Temperature (1.5mm from case for 10 Sec.)	---	260	°C	
Internal Power Dissipation	---	2,500	mW	

Exceeding the absolute maximum ratings of the unit could cause damage.
These are not continuous operating ratings.

Notes :

- Specifications typical at $T_a = +25^\circ\text{C}$, resistive load, nominal input voltage, rated output current unless otherwise noted.
- Transient recovery time is measured to within 1% error band for a step change in output load of 75% to 100%.
- Ripple & Noise measurement bandwidth is 0-20 MHz.
- These power converters require a minimum output loading to maintain specified regulation.
- Operation under no-load conditions will not damage these modules; however, they may not meet all specifications listed.
- All DC/DC converters should be externally fused at the front end for protection.
- Other input and output voltage may be available, please contact factory.
- Specifications subject to change without notice.

Environmental Specifications

Parameter	Conditions	Min.	Max.	Unit
Operating Temperature	Ambient	-40	+71	°C
Operating Temperature	Case	-40	+90	°C
Storage Temperature		-40	+125	°C
Humidity		---	95	%
Cooling	Free-Air Convection			
Conducted EMI	EN55022 Class A			





MIW4000 Series

Input Specifications

Parameter	Model	Min.	Typ.	Max.	Unit
Start Voltage	24V Input Models	7	8	9	VDC
	48V Input Models	14	16	18	
Under Voltage Shutdown	24V Input Models	----	----	8.5	
	48V Input Models	----	----	16	
Reverse Polarity Input Current	All Models	----	----	0.5	A
Short Circuit Input Power		----	----	2500	mW
Input Filter		Pi Filter			

Output Specifications

Parameter	Conditions	Min.	Typ.	Max.	Unit
Output Voltage Accuracy		----	±0.5	±1.0	%
Output Voltage Balance	Dual Output, Balanced Loads	----	±0.5	±2.0	%
Line Regulation	Vin=Min. to Max.	----	±0.2	±0.5	%
Load Regulation	Io=10% to 100%	----	±0.3	±1.0	%
Ripple & Noise (20MHz)		----	50	75	mV P-P
Ripple & Noise (20MHz)	Over Line, Load & Temp.	----	----	100	mV P-P
Ripple & Noise (20MHz)		----	----	15	mV rms
Over Power Protection		110	250	350	%
Transient Recovery Time	25% Load Step Change	----	250	500	µS
Transient Response Deviation		----	±3	----	%
Temperature Coefficient		----	±0.01	±0.02	%/°C
Output Short Circuit	Continuous				

General Specifications

Parameter	Conditions	Min.	Typ.	Max.	Unit
Isolation Voltage Rated	60 Seconds	1500	----	----	VDC
Isolation Voltage Test	Flash Tested for 1 Second	1650	----	----	VDC
Isolation Resistance	500VDC	1000	----	----	MΩ
Isolation Capacitance	100KHz, 1V	----	350	550	pF
Switching Frequency		----	340	----	KHz
MTBF	MIL-HDBK-217F @ 25°C, Ground Benign	1000	----	----	K Hours

Capacitive Load

Models by Vout	3.3V	5V	12V	15V	±5V #	±12V #	±15V #	Unit
Maximum Capacitive Load	3000	3000	3000	3000	680	680	680	µF

For each output



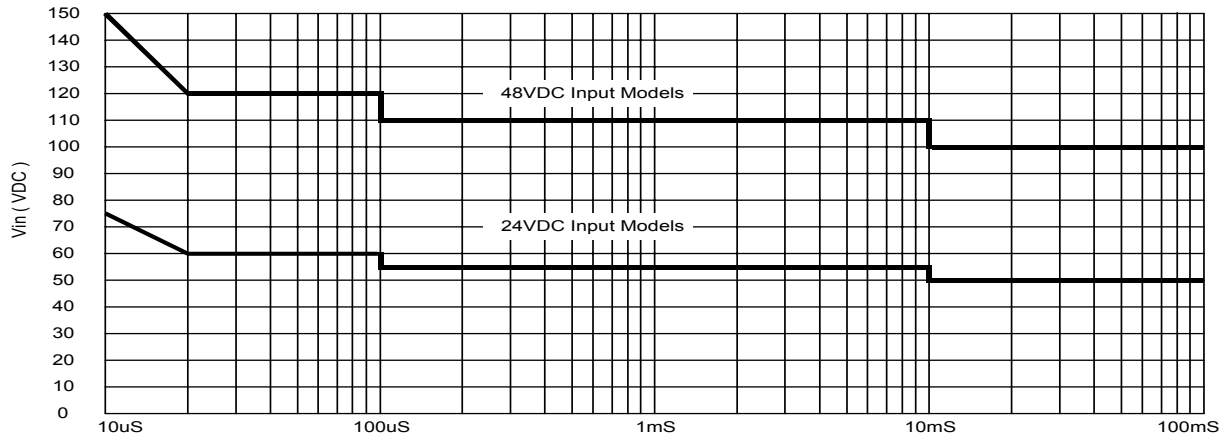


MIW4000 Series

Input Fuse Selection Guide

24V Input Models 1500mA Slow-Blow type	48V Input Models 750mA Slow-Blow type
---	--

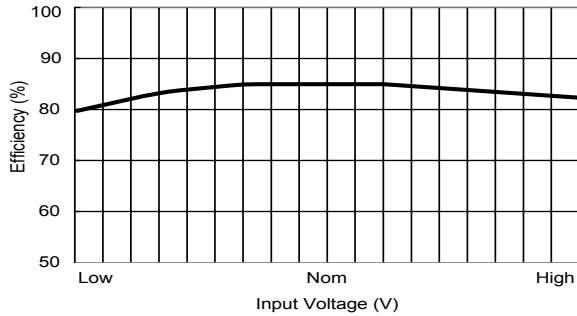
Input Voltage Transient Rating



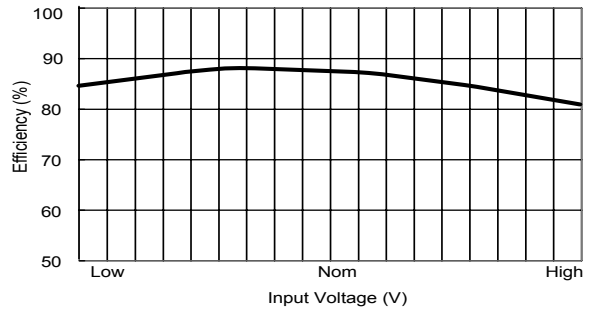


Component Distributors, Inc. ~ www.cdiweb.com ~ 1-800-777-7334 ~ sales@cdiweb.com

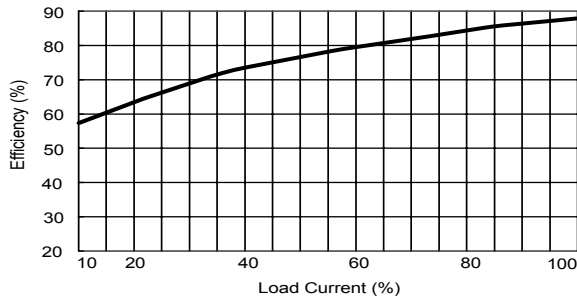
MIW4000 Series



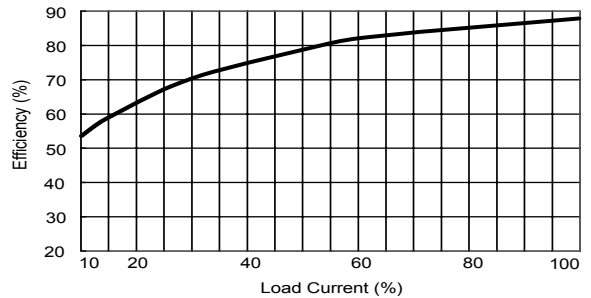
Efficiency vs Input Voltage (Single Output)



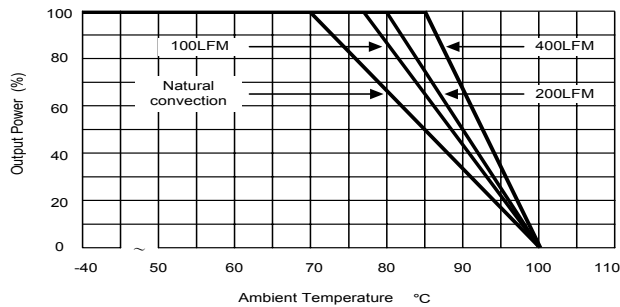
Efficiency vs Input Voltage (Dual Output)



Efficiency vs Output Load (Single Output)



Efficiency vs Output Load (Dual Output)



Derating Curve





MIW4000 Series

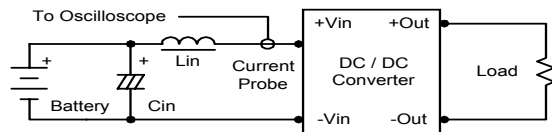
Test Configurations

Input Reflected-Ripple Current Test Setup

Input reflected-ripple current is measured with an inductor L_{in} (4.7uH) and C_{in} (220uF, ESR < 1.0Ω at 100 KHz) to simulate source impedance.

Capacitor C_{in} , offsets possible battery impedance.

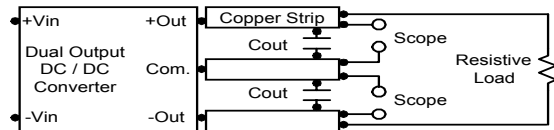
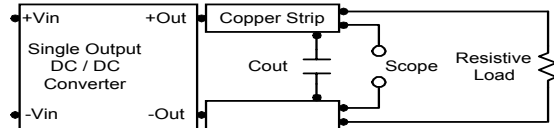
Current ripple is measured at the input terminals of the module, measurement bandwidth is 0–500 KHz.



Peak-to-Peak Output Noise Measurement Test

Use a C_{out} 0.47uF ceramic capacitor.

Scope measurement should be made by using a BNC socket, measurement bandwidth is 0–20 MHz. Position the load between 50 mm and 75 mm from the DC/DC Converter.



Design & Feature Considerations

Maximum Capacitive Load

The MIW4000 series has limitation of maximum connected capacitance at the output.

The power module may be operated in current limiting mode during start-up, affecting the ramp-up and the startup time.

For optimum performance we recommend 680uF maximum capacitive load for dual outputs and 3000uF capacitive load for single outputs.

The maximum capacitance can be found in the data sheet.

Overcurrent Protection

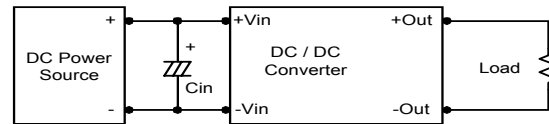
To provide protection in a fault (output overload) condition, the unit is equipped with internal current limiting circuitry and can endure current limiting for an unlimited duration. At the point of current-limit inception, the unit shifts from voltage control to current control. The unit operates normally once the output current is brought back into its specified range.

Input Source Impedance

The power module should be connected to a low ac-impedance input source. Highly inductive source impedances can affect the stability of the power module.

In applications where power is supplied over long lines and output loading is high, it may be necessary to use a capacitor at the input to ensure startup.

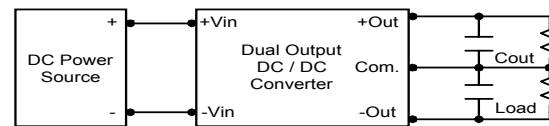
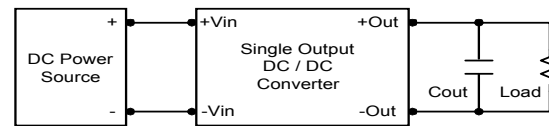
Capacitor mounted close to the power module helps ensure stability of the unit, it is recommended to use a good quality low Equivalent Series Resistance (ESR < 1.0Ω at 100 KHz) capacitor of a 4.7uF for the 24V input devices and a 2.2uF for the 48V devices.



Output Ripple Reduction

A good quality low ESR capacitor placed as close as practicable across the load will give the best ripple and noise performance.

To reduce output ripple, it is recommended to use 3.3uF capacitors at the output.



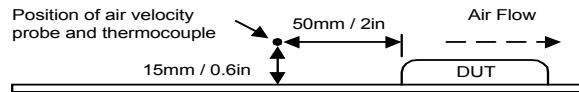


MIW4000 Series

Thermal Considerations

Many conditions affect the thermal performance of the power module, such as orientation, airflow over the module and board spacing. To avoid exceeding the maximum temperature rating of the components inside the power module, the case temperature must be kept below 90°C.

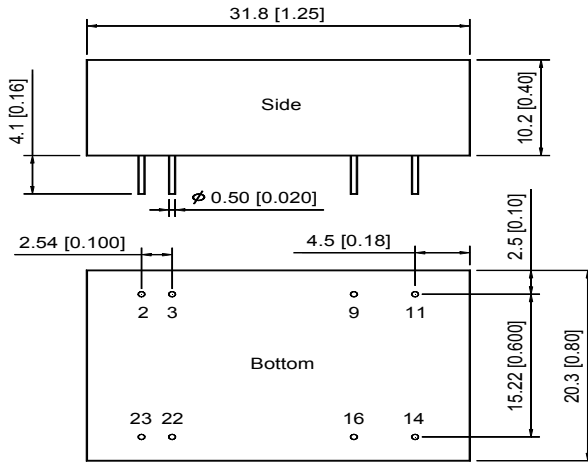
The derating curves are determined from measurements obtained in an experimental apparatus.





MIW4000 Series

Mechanical Dimensions

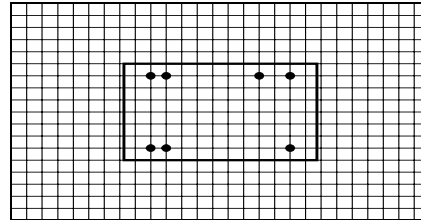


Tolerance	Millimeters	Inches
	X.X±0.25	X.XX±0.01
	X.XX±0.13	X.XXX±0.005
Pin	±0.05	±0.002

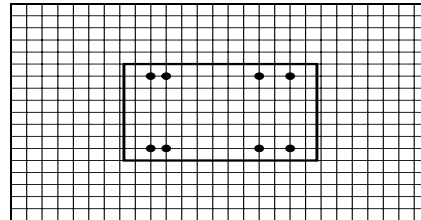
Connecting Pin Patterns

Top View (2.54 mm / 0.1 inch grids)

Single Output



Dual Output



Pin Connections

Pin	Single Output	Dual Output
2	-Vin	-Vin
3	-Vin	-Vin
9	No Pin	Common
11	NC	-Vout
14	+Vout	+Vout
16	-Vout	Common
22	+Vin	+Vin
23	+Vin	+Vin

NC: No Connection

Physical Characteristics

- Case Size** : 31.8×20.3×10.2 mm
: 1.25×0.80×0.40 inches
- Case Material** : Metal With Non-Conductive Baseplate
- Weight** : 17.3g
- Flammability** : UL94V-0

The MIW4000 converter is encapsulated in a low thermal resistance molding compound that has excellent resistance/electrical characteristics over a wide temperature range or in high humidity environments. The encapsulant and unit case are both rated to UL 94V-0 flammability specifications. Leads are tin plated for improved solderability.

