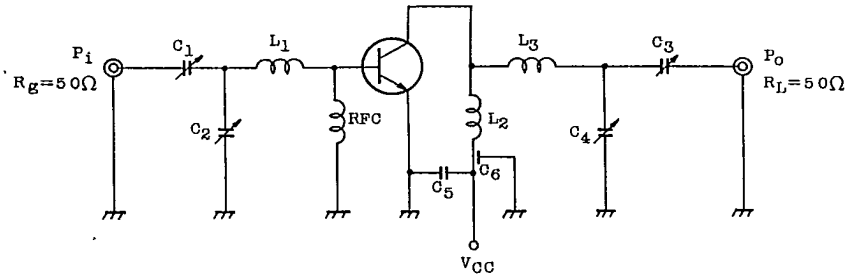


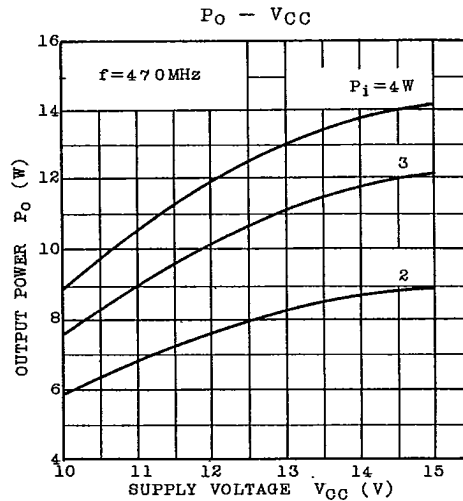
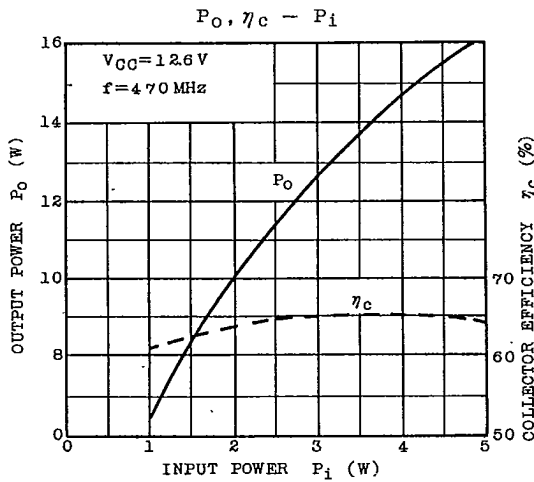


**2SC2106**

Fig. f=470MHz P<sub>o</sub> TEST CIRCUIT



- C<sub>1</sub>, C<sub>4</sub> : 1.5 ~ 5pF
- C<sub>2</sub>, C<sub>3</sub> : 2 ~ 15pF
- C<sub>5</sub> : 0.01μF
- C<sub>6</sub> : 1000pF FEED THROUGH
- L<sub>1</sub>, L<sub>3</sub> : 5mm×15mm COPPER PLATE
- L<sub>2</sub> : φ1 SILVER PLATED COPPER WIRE, 10ID, 1/2T
- RFC : φ1 ENAMEL COATED COPPER WIRE, 3ID, 5T



TOSHIBA CORPORATION